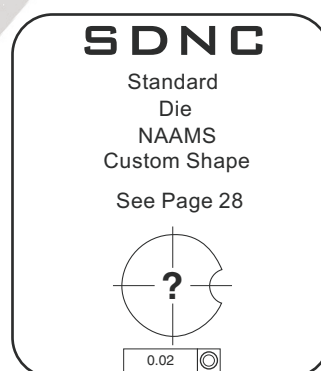
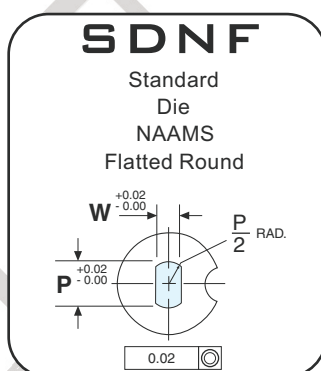
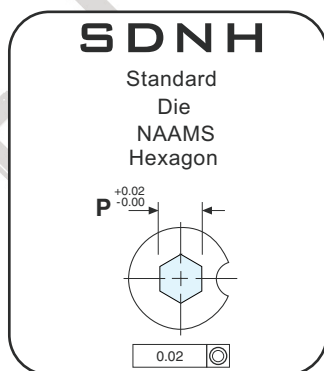
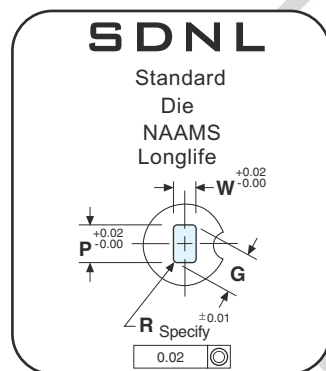
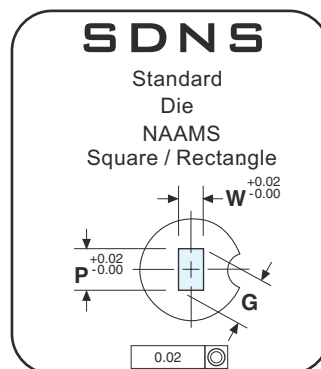
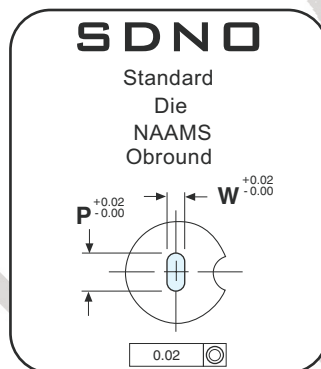
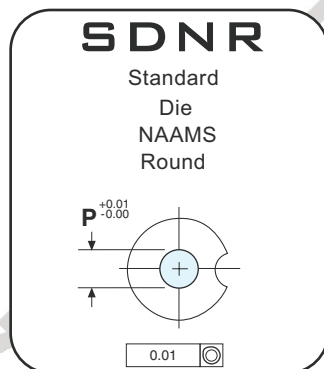
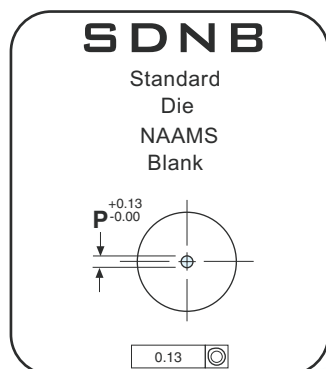
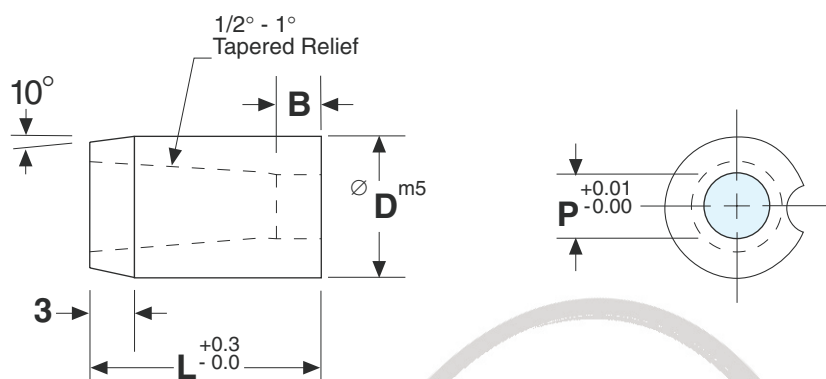


Standard Die Naams



SKD11/D2 Steel - HRC 60-63
SKH51/M2 Steel - HRC 60-63

BEP Code	"D"	Land "B"			Overall Length "L"							Point Range "P"	Min. "W"
					20	22	25	28	30	32	35		
SDN_	8	3	4	5	20	22	25	28	30	32	35	1.0 – 4.8	1.3
SDN_	10	3	4	5	20	22	25	28	30	32	35	1.6 – 6.8	1.3
SDN_	13	3	5	8	20	22	25	28	30	32	35	3.0 – 8.8	1.9
SDN_	16	3	5	8	20	22	25	28	30	32	35	7.4 – 10.8	1.9
SDN_	20	3	5	10	20	22	25	28	30	32	35	9.5 – 13.6	1.9
SDN_	22	3	6	10	20	22	25	28	30	32	35	10.5 – 15.0	1.9
SDN_	25	3	6	10	20	22	25	28	30	32	35	12.0 – 17.0	1.9
SDN_	32	3	6	12	20	22	25	28	30	32	35	16.0 – 22.0	6.4
SDN_	38	3	8	12	20	22	25	28	30	32	35	18.0 – 27.0	6.4
SDN_	40	3	8	12	20	22	25	28	30	32	35	18.0 – 27.0	8.0
SDN_	45	3	8	12	20	22	25	28	30	32	35	18.0 – 35.0	2.4
SDN_	50	3	8	12	20	22	25	28	30	32	35	18.0 – 40.0	4.0
SDN_	56	3	8	12	20	22	25	28	30	32	35	18.0 – 45.0	4.0
SDN_	63	3	8	12	20	22	25	28	30	32	35	18.0 – 50.0	4.0