

Extrusion Series

GIS

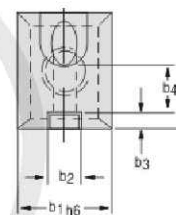
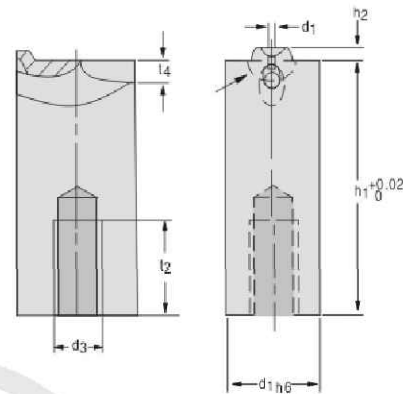
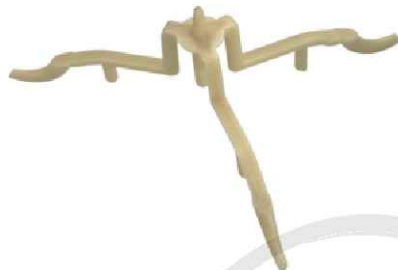
Cashew Gate Insert



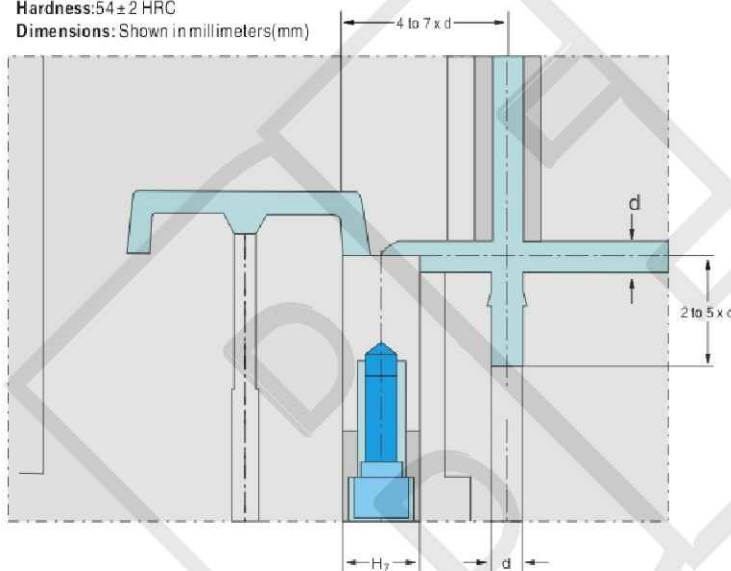
Round gate insert
Round with
rounded tunnel



Square gate insert
Square with
rounded tunnel



Material: 1.2767 Steel
Hardness: 54 ± 2 HRC
Dimensions: Shown in millimeters (mm)



Cashew gate insert benefits include:

- Improves product surface quality
- Enables smaller diameters in the gate
- Provides automatic separation of runner from part
- Suitable for flat or thin-walled part applications
- Available off-the-shelf to reduce mold build time and costs
- Easy to replace, allowing maximum

Cashew gate features include:

- Precision machined for accuracy
- Highly polished gate detail
- Hardened to 54 HRC for reliable performance
- Available in round or square insert styled
- 24 sizes to suit most applications

Square Gate Insert-GIS

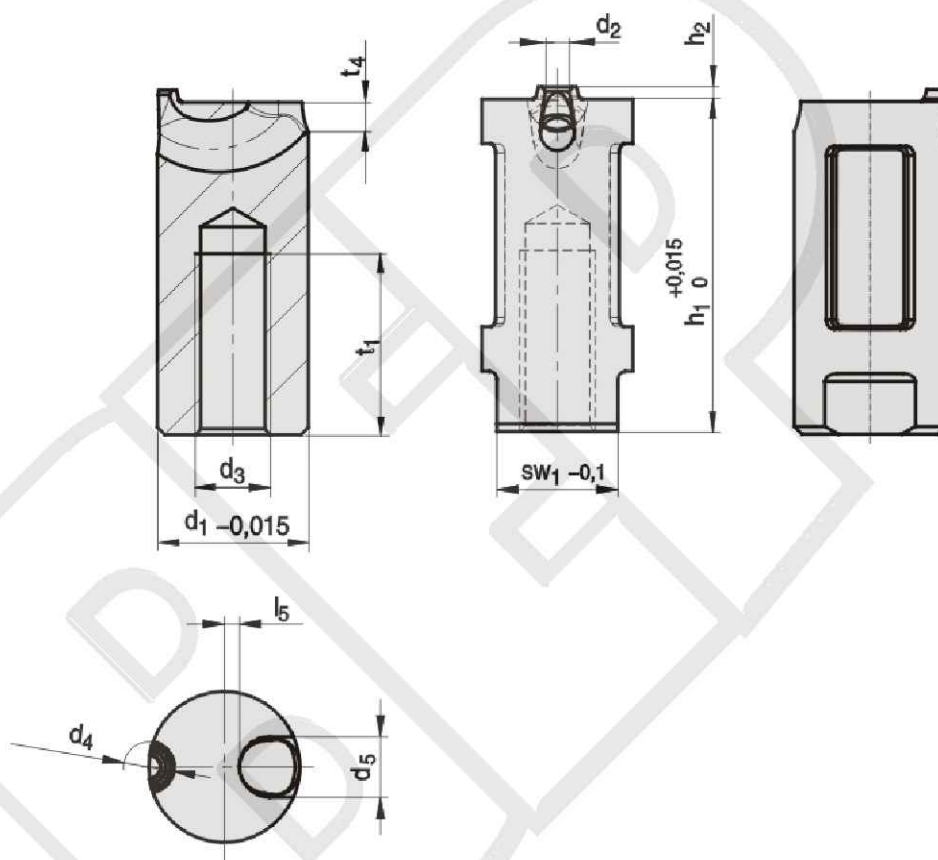
ITEM NUMBER	l1	b1	h1	d1	h2	d3	b4	b3	b2	t4	t2	r1
GIS08061204	8	6	17-	0.4	0.8	M4	3.7	1.3	2.6	2	10	1.5
GIS08061706	8	6	17-	0.6								
GIS08061708	8	6	17-	0.8								
GIS10082206	10	8	22-	0.6	0.8	M4	4	1.4	2.8	2	10	2
GIS10082208	10	8	22-	0.8								
GIS10082210	10	8	22-	1								
GIS12102706	12	10	27-	0.6	0.8	M5	4.5	1.5	3	2.25	12	5
GIS12102708	12	10	27-	0.8								
GIS12102710	12	10	27-	1								
GIS15122708	15	12	27-	0.8	0.8	M6	5	1.75	3.5	2.5	12	2.5
GIS15122710	15	12	27-	1								
GIS15122712	15	12	27-	1.2								

BRAHMADEVI ENGINEERING PRODUCTS

Regd. Office : 19, Martand Chowk, INDORE - 452 007 (M.P.) INDIA
Ph. : +91 - 731 - 2720243, Fax : +91 - 731 - 2721554
E-mail : ishan1809@yahoo.com, ruchir@diespares.com Website : www.diespares.com

Z 1050

Insets of Inlet gate of horn wires



Nr./No.	SW ₁	t ₁	t ₄	t ₅	h ₂	d ₃	d ₄	d ₅	d ₁	h ₁	d ₂
Z1050/ 6x17x0.6	5.5	10	1.25	0.5	0.6	M4	2.2	2.5	6	17	0.6
Z1050/ 8x22x0.6	6	13	1.5	0.75			2.2	3	8	22	0.6
0.8							2.4				0.8
Z1050/ 10x22x0.8	8	12	2	1	0.8	M5	2.5	4	10	22	0.8
1.2							2.9				1.2
1.6							3.3				1.6
Z1050/ 12x22x1.2	10	11	2.5				2.9	5	12	22	1.2
1.6							3.3				1.6
2.0							3.7				2.0

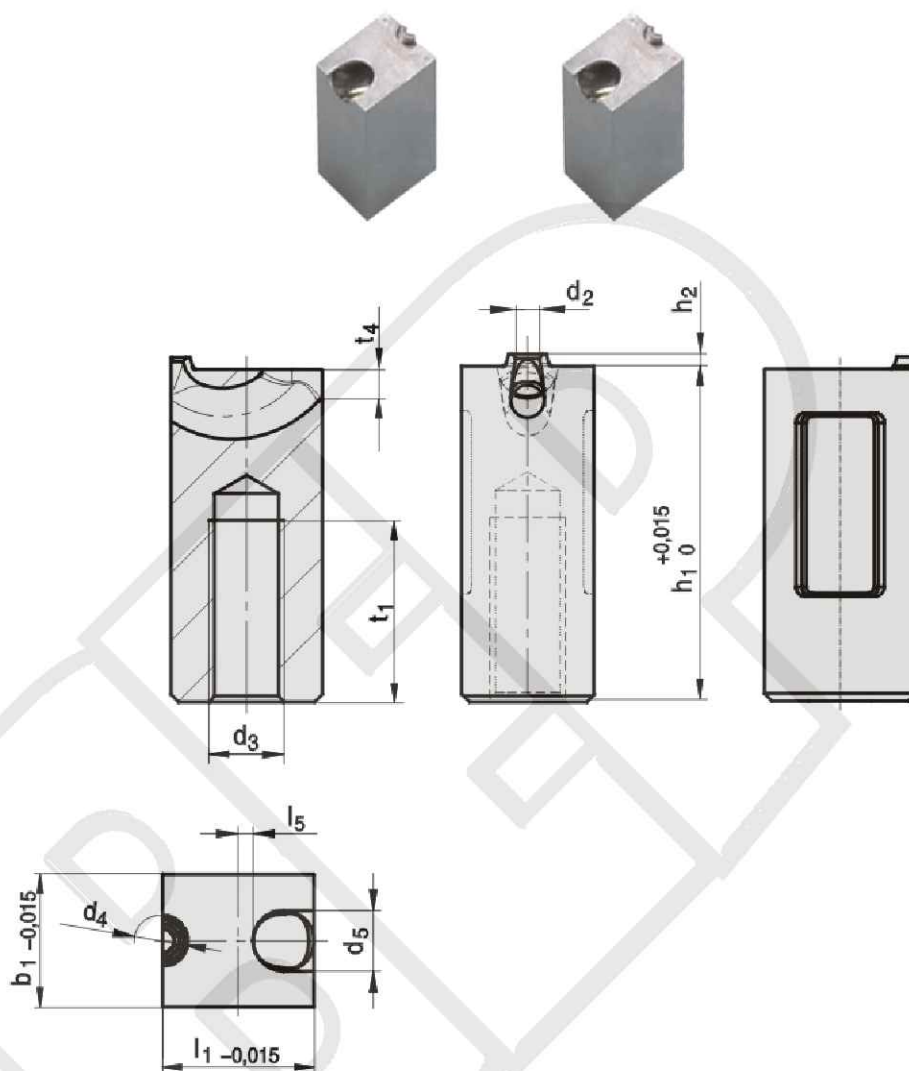


Order: Type No. x Pcs
Z1050/6 x 10

Extrusion Series

Z 1060

Insets of Inlet gate of horn wires



Nr./No.	t1	t4	t5	h2	d3	d4	d5	l1	d1	h1	d2
Z1060/ 8x6x22x0.6	13	1.5	0.75	0.6	M4	2.2	3	8	6	22	0.6
0.8						2.4					0.8
Z1060/ 10x8x22x0.8	12	2	1	0.8	M5	2.5	4	10	8		0.8
1.2						2.9					1.2
1.6						3.3					1.6
Z1060/ 12x10x22x1.2	11	2.5	1	0.8	M5	2.9	5	12	10		1.2
1.6						3.3					1.6
2.0						3.7					2.0



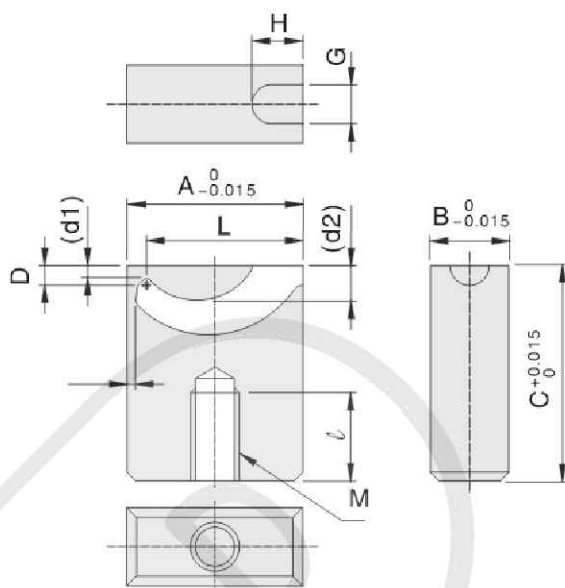
Order: Type No. x Pcs
Z1060/8 x 10

BRAHMADEVI ENGINEERING PRODUCTS

Regd. Office :19, Martand Chowk, INDORE - 452 007 (M.P.) INDIA
Ph. : +91 - 731 - 2720243, Fax : +91 - 731 - 2721554
E-mail : ishan1809@yahoo.com, ruchir@diespares.com Website : www.diespares.com

MTGCS / MTGC

Insets of Inlet gate of horn wires

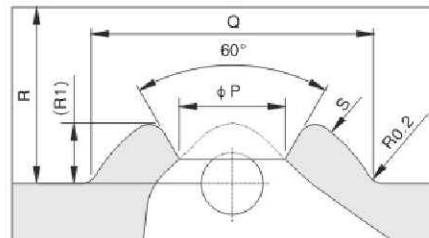
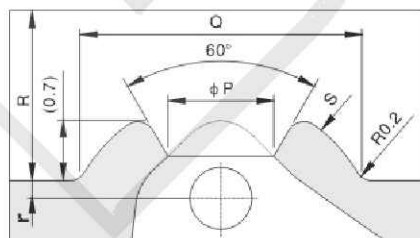
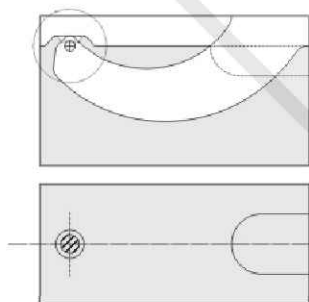


Catalog No.		A	B	C	L	D	(d1)	(d2)	(d3)	G	H	M x l
Type	No.											
MTGCS	1	15	6	18	13.3	2	(1.5)	(3.5)	(0.9)	2.5	4	M4x8
MTGC	1	18	8	22	16	2	(1.3)	(3.5)	(0.9)	4	5.2	M5x9
	2	25	10	22	22.1	3	(2.1)	(4.8)	(1.2)	6	6.5	M5x8
	3	30	12	27	26.9	5	(4.1)	(7.5)	(1.2)	8	7	M6x9
	4	45	12	36	41.2	10	(9.1)	(16.7)	(1.8)	8	9.6	M6x8



Order: Type No. x Pcs
MTGC x 10

Schematic diagram of inlet gate process

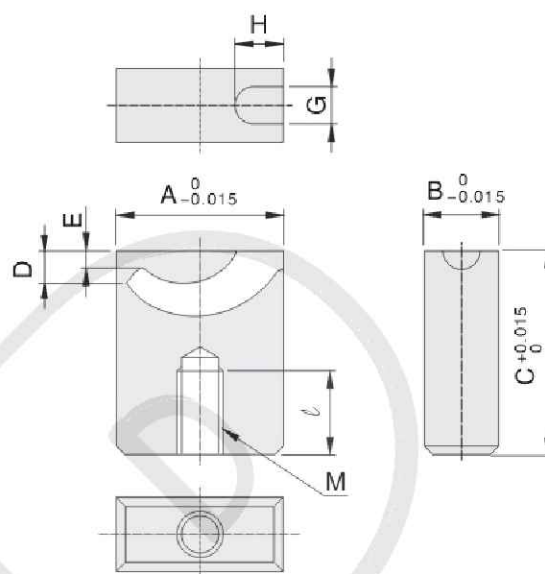


Catalog No.										
	P	Q	R	r	s	P	Q	R	r	s
MTGCS1	—	—	—	—	—	φ 0.4~0.8	2.7	2	0.5	R1.65
MTGC1	φ 0.4~0.7	2.6	1.8	0.2	R1.4	φ 0.7~1.2	3.2	2	0.7	R1.8
MTGC2	φ 0.4~1.2	3.5	2.75	0.25	R2	φ 1.2~1.8	4.5	3	0.9	R2.6

Extrusion Series

MSGC

Insets of Inlet gate of horn wires



Catalog No.		A	B	C	D	E	G	H	M x l
Type	No.								
MSGC	1	18	8	22	4.1	2.5	4	5.2	M5x9
	2	25	10	22	5.7	3.2	6	6.6	M5x8
	3	30	12	27	8.4	5.5	8	7	M6x9



Order:

Type No.

x Pcs

MSGC

x 10

Schematic diagram of inlet gate process

