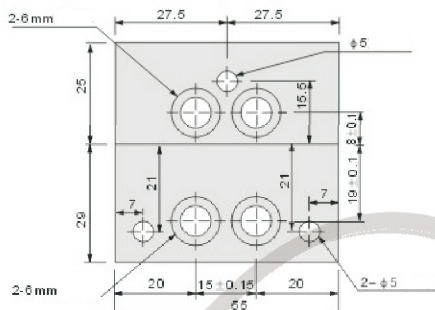
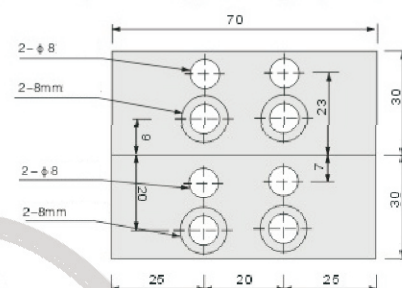


## DTP 05 Latch Lock

Applicable to the three template needle injection mold, has the function of breaking the head and release a completed. Precision casting, precision, hook adopts advanced alloy steel by heat treatment and grinding, ditch is particularly strong, on both sides of the use of heat-resistant spring sheet, good elasticity, heat tolerance, several die one hundred thousand times capacity. The locking device to the outside force, not to hurt the mold, after the device has symmetrical sides, fixed pin hole of 5mm cutter knife; and fixed by the fixing pin, to increase the fixed.



DTP05/100 200 300kgf



DTP05/600kgf

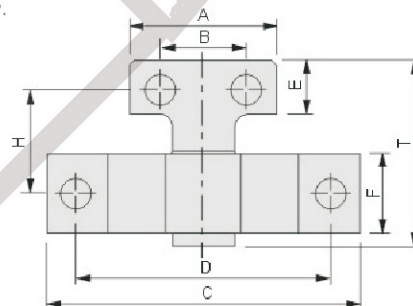
Type	(Kgf)
DPT05	100
	200
	300
	600



Order: Type No. x Pcs  
DPT05 x 10

## DTP 03A Latch Lock

With a simple structure, can use the mold completely open and closed, and the device is simple with high interchangeability. The device is most suitable for pin point injection has snapped three template material and release a fully functional. And the use of high-grade alloy steel after heat treatment and grinding, imported spring, reliable quality.



Type	Size									(Kgf)
	A	B	C	D	E	F	H	T	⌀	
DPT03A	40	26	72	60	20	20	23	49	M8	250
DPT03B	36	22					66	96		
DPT03C	50	30	113	90	22	30	38	73	M10	300
DPT03D							79	118		
DPT03E							38	73	M12	400
DPT03F					25		103	135		



Order: Type No. x Pcs  
DPT03A x 10