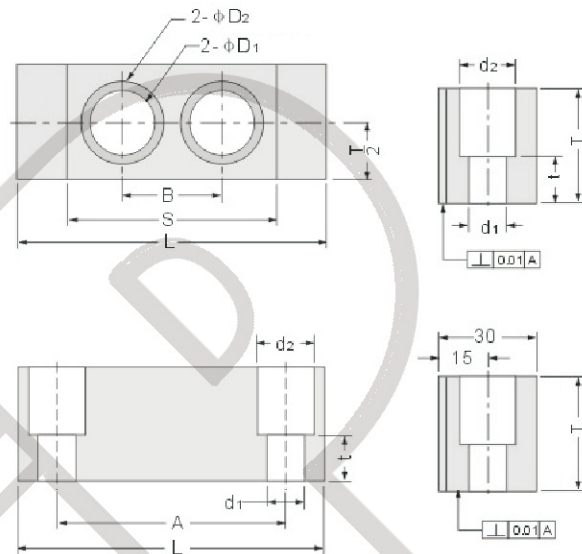
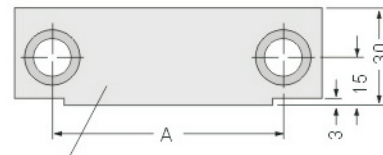


MLK Latch Lock

Comparing with other mode locking buckle, it is much easier to install. Deceleration is basically not needed during die assembly so that it shortens shaping cycle.



Type	(kgf) 20°C	A	L	T	t	d1	d2
MLK-40	40kgf	63	80	25	12	9	14
MLK-80	80kgf						
MLK-100	100kgf	100	126	40	15	11	18
MLK-200	200kgf						



Order: Type No. x Pcs
MLK-40 x 10

Example

