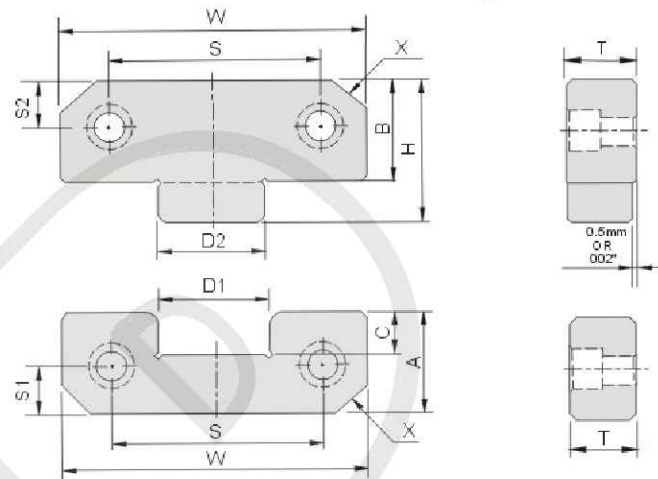
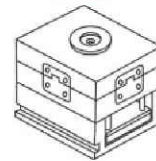


PL Straight Side

Diagram



①	YK30	HRC50° ~55°
		HRC55° ~60°
②	SKD11	HRC58° ~62°

INCH

Type No.	W 0 -0.0004	T	A	B	C	D1 +0.0002 +0.0004	D2 0 -0.0002	H	S	S1	S2	X	SHCS
PL1.5	1.500	0.620	0.87	0.87	0.33	0.500	0.500	1.180	0.938	0.281	0.437	0.19	1/4-20
PL2.0	2.000	0.620	0.87	0.87	0.33	0.680	0.680	1.180	1.250	0.375	0.437	0.19	1/4-20
PL3.0	3.000	0.745	1.37	1.36	0.57	1.000	1.000	1.910	2.250	0.688	0.688	0.38	3/8-16
PL4.0	4.000	0.745	1.87	1.87	0.79	1.375	1.375	2.640	2.750	0.875	0.875	0.50	3/8-16
PL5.0	5.000	1.120	1.87	1.87	0.79	1.750	1.750	2.640	3.500	0.875	0.875	0.50	1/2-13

MM

Type No.	W 0 -0.01	T	A	B	C	D1 +0.0002 +0.0004	D2 0 -0.0002	H	S	S1	S2	X	SHCS
PL38	38	13	22	22	8.5	12	12	30	22	7	7	5	M6
PL50	50	16	21.5	21.5	9.5	17	17	30	34	11	11	5	M6
PL75	75	19	36	36	15	25	25	50	50	18	18	8	M10
PL100	100	19	45	45	21	35	35	65	70	22	22	10	M10
PL125	125	25	45	45	21	45	45	65	84	22	22	10	M10