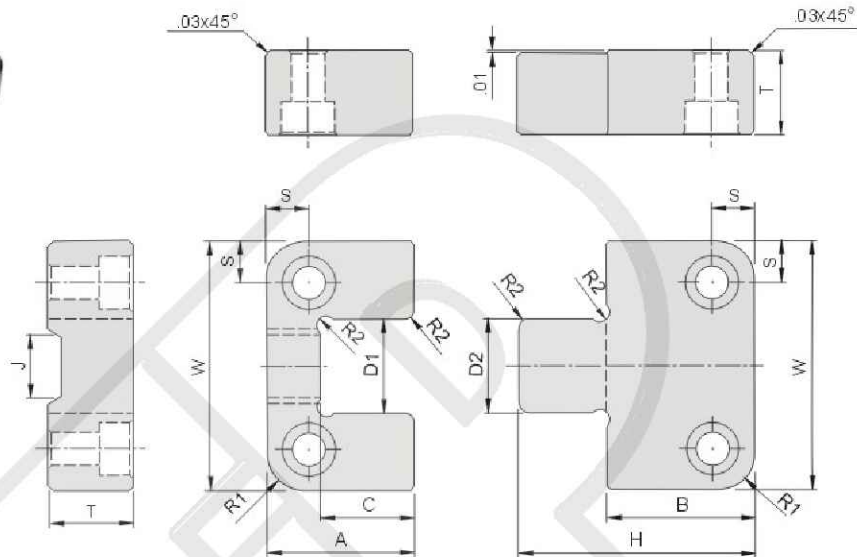


# Positioning Components

## SL Side Inter Locks



Type No.	T	W 0 -0.0005	A	B	C	D1 +0.0004 +0.0002	D2 0 -0.0002	H	J	POCKET RADIUS	R1	R2	S	SHCS
SL37	0.375	1.0000	1.124	0.874	0.53	0.5000	0.5000	1.37	1/4x1/16	3/16	0.22	0.06	0.250	#10-32X1/2"
SL49	0.490	1.2500	1.124	0.874	0.66	0.5000	0.5000	1.50	5/16x1/16	3/16	0.22	0.06	0.250	#8-32X5/8"
SL50C	0.500	1.5000	0.874	0.874	0.56	0.5630	0.5630	1.40	3/8x1/16	3/16	0.22	0.06	0.250	#8-32X5/8"
SL50	0.500	2.0000	1.374	0.874	0.66	0.7500	0.7500	1.50	1/2x1/16	3/16	0.22	0.06	0.312	#10-32X5/8"
SL75	0.750	3.0000	1.874	0.874	1.12	1.2500	1.2500	1.96	3/4x1/16	1/4	0.28	0.12	0.375	1/4-20X3/4"
SL100	1.000	4.0000	2.374	1.374	1.25	1.5000	1.5000	2.59	1x3/32	1/2	0.53	0.12	0.500	3/8-16X1"
SL125	1.250	5.0000	2.874	1.374	1.63	2.0000	2.0000	2.96	1x3/32	1/2	0.53	0.12	0.625	1/2-13X1 1/4"
SL150	1.500	6.0000	2.874	1.374	1.75	2.5000	2.5000	3.09	1x3/32	1/2	0.53	0.12	0.625	1/2-13X1 1/2"