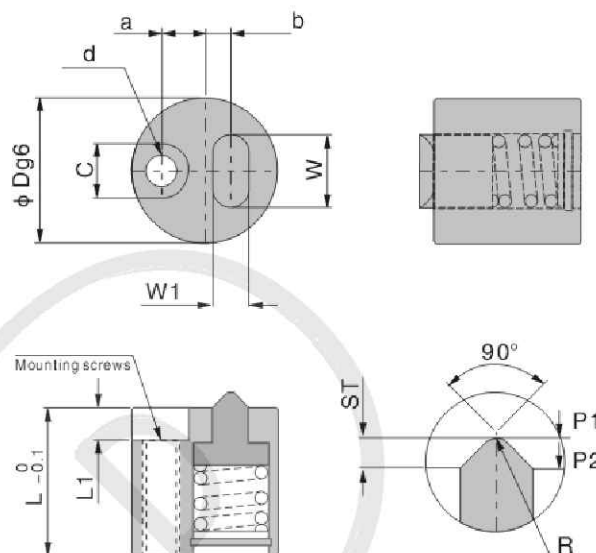


# Slide Retainer Series

## SLLK Slide Retainer

Characteristics: It adopts surface contact which reduces unit pressure of contact surface so that it can effectively prevent damage of side core-pulling slider. It applies to locking of much heavier component.



Type	D	ST	L	L1	a	b	c	d	W	W1	R	R	Mounting screws	(kgf) Max. holding weight
SLLK	16C	1.6	15	3.3	5	2.5	6	3.2	8	4	1	M4	M3x20	28.6
	16F													78.8
	20F	2.0	20	4.5	6	3.5	7.5	4.3	10	5	1.1	M5	M4x25	62.9
	20L													110.0



Order: Type No. x Pcs  
SLLK16C x 10

## Example

Precautions: Locking load is too big, so it may make slanted guide pillar and bundle block bear too much load leading to sintering phenomenon. It is advised to reduce sliding resistance, implement lubrication and strengthen rigidity.

