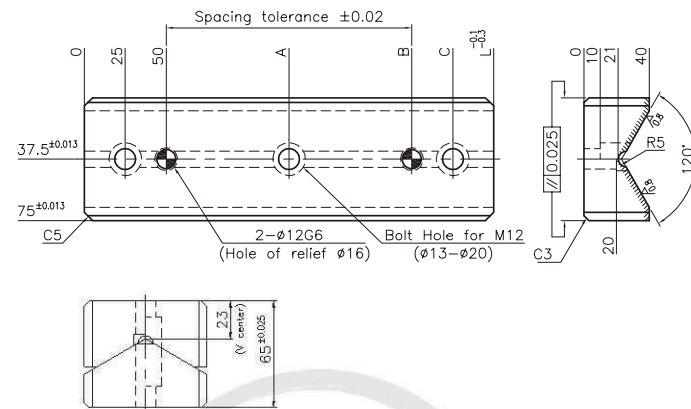


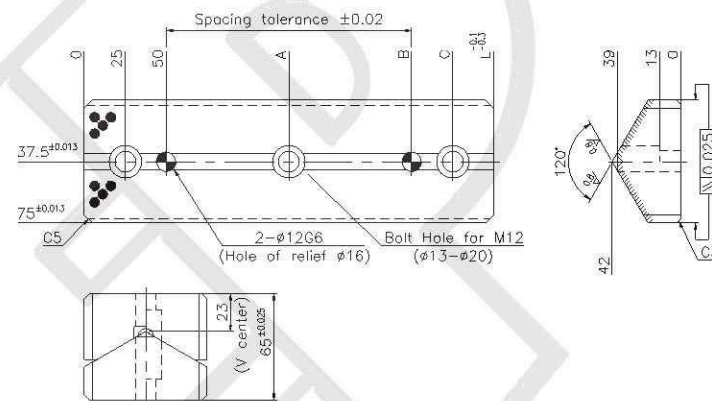


## Cam Slide Guide “U”Block / “V”Block

G21 (U Block)



G22 (Steel with Graphite)  
G23 (Bronze with Graphite)



**M** Material: G21 - 1045 (S45C) / Area to be induction Hardened(Hached Area) / HRC40 or more  
G22 - 1045 (S45C) with Graphite / Area to be induction Hardened (Hached Area) / HRC40 or more  
G23 - Bronze with Graphite

NO. of Holes	L	A	B	C	NAAMS Code	Part Name	
						Series Name	No.
2	150	-	100	125	G217515	G21	7515
	200	-	150	175	G217520		7520
3	250	125	200	225	G217525		7525
	300	150	250	275	G217530		7530

Order	part name	
	Series Name	No.
	G21	7520 (G217520)

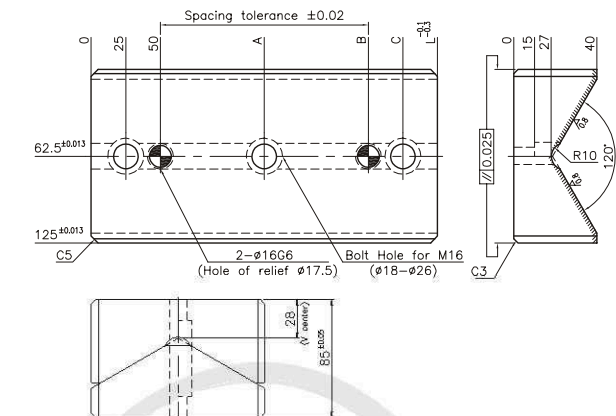
NO. of Holes	L	A	B	C	NAAMS Code		Part Name	
					Steel Type	Bronze Type	Series Name	No.
2	150	-	100	125	G227515	G237515	G22	7515
	200	-	150	175	G227520	G237520		7520
3	250	125	200	225	G227525	G237525	G23	7525
	300	150	250	275	G227530	G237530		7530

Order	part name	
	Series Name	No.
	G22	7520 (G227520)

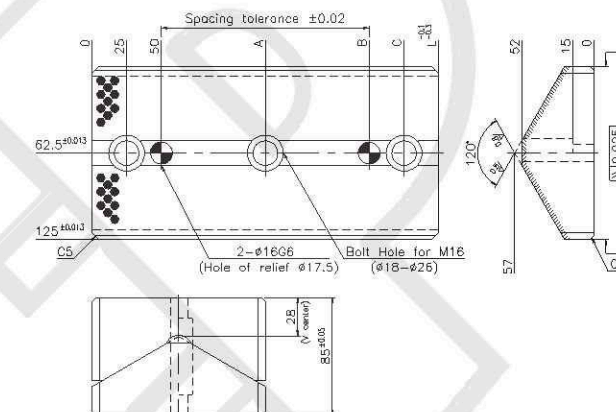


## Cam Slide Guide “U”Block / “V”Block

G31 (U Block)



G32 (Steel with Graphite)  
G33 (Bronze with Graphite)



**M** Material: G31 - 1045 (S45C) / Area to be induction Hardened (Hached Area) / HRC40 or more  
G32 - 1045 (S45C) with Graphite / Area to be induction Hardened (Hached Area) / HRC40 or more  
G33 - Bronze with Graphite

NO. of Holes	L	A	B	C	NAAMS Code	Part Name	
						Series Name	No.
2	150	-	100	125	G311215	G31	1215
	200	-	150	175	G311220		1220
3	250	125	200	225	G311225		1225
	300	150	250	275	G311230		1230

Order	part name	
	Series Name	No.
	G31	1225 (G311225)

NO. of Holes	L	A	B	C	NAAMS Code		Part Name	
					Steel Type	Bronze Type	Series Name	No.
2	150	-	100	125	G321215	G331215	G32	1215
	200	-	150	175	G321220	G331220		1220
3	250	125	200	225	G321225	G331225	G33	1225
	300	150	250	275	G321230	G331230		1230

Order	part name	
	Series Name	No.
	G32	1225 (G321225)